

74VCX16240

Low Voltage 16-Bit Inverting Buffer/Line Driver with 3.6V Tolerant Inputs and Outputs

General Description

The VCX16240 contains sixteen inverting buffers with 3-STATE outputs to be employed as a memory and address driver, clock driver, or bus oriented transmitter/receiver. The device is nibble (4-bit) controlled. Each nibble has separate 3-STATE control inputs which can be shorted together for full 16-bit operation.

The 74VCX16240 is designed for low voltage (1.2V to 3.6V) V_{CC} applications with I/O capability up to 3.6V.

The 74VCX16240 is fabricated with an advanced CMOS technology to achieve high speed operation while maintaining low CMOS power dissipation.

Features

- 1.2V to 3.6V V_{CC} supply operation
- 3.6V tolerant inputs and outputs
- t_{PD}
 - 2.5 ns max for 3.0V to 3.6V V_{CC}
- Power-off high impedance inputs and outputs
- Supports live insertion and withdrawal (Note 1)
- Static Drive (I_{OH}/I_{OL})
 - ± 24 mA @ 3.0V V_{CC}
- Uses patented noise/EMI reduction circuitry
- Latch-up performance exceeds 300 mA
- ESD performance:
 - Human body model > 2000V
 - Machine model > 200V

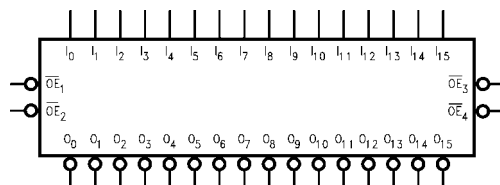
Note 1: To ensure the high-impedance state during power up or power down, \overline{OE} should be tied to V_{CC} through a pull-up resistor; the minimum value of the resistor is determined by the current-sourcing capability of the driver.

Ordering Code:

| Order Number | Package Number | Package Descriptions |
|---------------|----------------|---|
| 74VCX16240MTD | MTD48 | 48-Lead Thin Shrink Small Outline Package (TSSOP), JEDEC MO-153, 6.1mm Wide |

Devices also available in Tape and Reel. Specify by appending the suffix letter "X" to the ordering code.

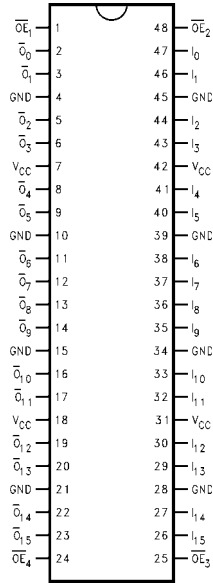
Logic Symbol



Pin Descriptions

| Pin Names | Description |
|------------------------------------|----------------------------------|
| \overline{OE}_n | Output Enable Input (Active LOW) |
| I_0-I_{15} | Inputs |
| $\overline{O}_0-\overline{O}_{15}$ | Outputs |

Connection Diagram



Truth Tables

| Inputs | | Outputs |
|-------------------|-----------|---------------------------------|
| \overline{OE}_1 | I_0-I_3 | $\overline{O}_0-\overline{O}_3$ |
| L | L | H |
| L | H | L |
| H | X | Z |

| Inputs | | Outputs |
|-------------------|-----------|---------------------------------|
| \overline{OE}_2 | I_4-I_7 | $\overline{O}_4-\overline{O}_7$ |
| L | L | H |
| L | H | L |
| H | X | Z |

| Inputs | | Outputs |
|-------------------|--------------|------------------------------------|
| \overline{OE}_3 | I_8-I_{11} | $\overline{O}_8-\overline{O}_{11}$ |
| L | L | H |
| L | H | L |
| H | X | Z |

| Inputs | | Outputs |
|-------------------|-----------------|---------------------------------------|
| \overline{OE}_4 | $I_{12}-I_{15}$ | $\overline{O}_{12}-\overline{O}_{15}$ |
| L | L | H |
| L | H | L |
| H | X | Z |

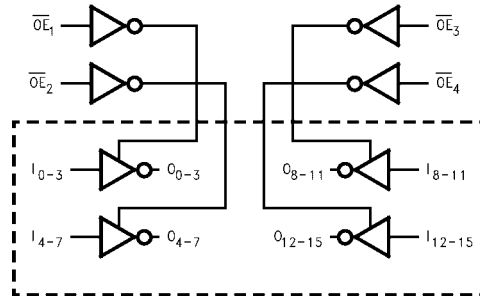
H = HIGH Voltage Level
 L = LOW Voltage Level
 X = Immaterial (HIGH or LOW, inputs may not float)
 Z = High Impedance

Functional Description

The 74VCX16240 contains sixteen inverting buffers with 3-STATE outputs. The device is nibble (4 bits) controlled with each nibble functioning identically, but independent of each other. The control pins may be shorted together to obtain full 16-bit operation. The 3-STATE outputs are controlled by an Output Enable (\overline{OE}_n) input. When \overline{OE}_n is LOW, the outputs are in the 2-state mode. When \overline{OE}_n is HIGH, the standard outputs are in the high impedance mode but this does not interfere with entering new data into the inputs.

When \overline{OE}_n is LOW, the outputs are in the 2-state mode. When \overline{OE}_n is HIGH, the standard outputs are in the high impedance mode but this does not interfere with entering new data into the inputs.

Logic Diagram



Absolute Maximum Ratings(Note 2)

| | |
|--|--------------------------|
| Supply Voltage (V_{CC}) | -0.5V to +4.6V |
| DC Input Voltage (V_I) | -0.5V to +4.6V |
| Output Voltage (V_O) | |
| Outputs 3-STATE | -0.5V to +4.6V |
| Outputs Active (Note 3) | -0.5V to $V_{CC} + 0.5V$ |
| DC Input Diode Current (I_{IK}) $V_I < 0V$ | -50 mA |
| DC Output Diode Current (I_{OK}) | |
| $V_O < 0V$ | -50 mA |
| $V_O > V_{CC}$ | +50 mA |
| DC Output Source/Sink Current | |
| (I_{OH}/I_{OL}) | ± 50 mA |
| DC V_{CC} or GND Current per | |
| Supply Pin (I_{CC} or GND) | ± 100 mA |
| Storage Temperature Range (T_{STG}) | -65°C to +150°C |

Recommended Operating Conditions (Note 4)

| | |
|---|-------------------|
| Power Supply | |
| Operating | 1.2V to 3.6V |
| Input Voltage | -0.3V to +3.6V |
| Output Voltage (V_O) | |
| Output in Active States | 0V to V_{CC} |
| Output in 3-STATE | 0.0V to 3.6V |
| Output Current in I_{OH}/I_{OL} | |
| $V_{CC} = 3.0V$ to 3.6V | ± 24 mA |
| $V_{CC} = 2.3V$ to 2.7V | ± 18 mA |
| $V_{CC} = 1.65V$ to 2.3V | ± 6 mA |
| $V_{CC} = 1.4V$ to 1.6V | ± 2 mA |
| $V_{CC} = 1.2V$ | ± 100 μA |
| Free Air Operating Temperature (T_A) | -40°C to +85°C |
| Minimum Input Edge Rate ($\Delta t/\Delta V$) | |
| $V_{IN} = 0.8V$ to 2.0V, $V_{CC} = 3.0V$ | 10 ns/V |

Note 2: The Absolute Maximum Ratings are those values beyond which the safety of the device cannot be guaranteed. The device should not be operated at these limits. The parametric values defined in the Electrical Characteristics tables are not guaranteed at the Absolute Maximum Ratings. The "Recommended Operating Conditions" table will define the conditions for actual device operation.

Note 3: I_O Absolute Maximum Rating must be observed.

Note 4: Floating or unused inputs must be held HIGH or LOW.

DC Electrical Characteristics

| Symbol | Parameter | Conditions | V_{CC} (V) | Min | Max | Units |
|----------|---------------------------|-----------------------|-----------------|----------------------|----------------------|-------|
| V_{IH} | HIGH Level Input Voltage | | 2.7 - 3.6 | 2.0 | | V |
| | | | 2.3 - 2.7 | 1.6 | | |
| | | | 1.65 - 2.3 | $0.65 \times V_{CC}$ | | |
| | | | 1.4 - 1.6 | $0.65 \times V_{CC}$ | | |
| | | | 1.2 | $0.65 \times V_{CC}$ | | |
| V_{IL} | LOW Level Input Voltage | | 2.7-3.6 | | 0.8 | V |
| | | | 2.3-2.7 | | 0.7 | |
| | | | 1.65-2.3 | | $0.35 \times V_{CC}$ | |
| | | | 1.4 - 1.6 | | $0.35 \times V_{CC}$ | |
| | | | 1.2 | | $0.05 \times V_{CC}$ | |
| V_{OH} | HIGH Level Output Voltage | $I_{OH} = -100 \mu A$ | 2.7-3.6 | $V_{CC} - 0.2$ | | V |
| | | $I_{OH} = -12$ mA | 2.7 | 2.2 | | |
| | | $I_{OH} = -18$ mA | 3.0 | 2.4 | | |
| | | $I_{OH} = -24$ mA | 3.0 | 2.2 | | |
| | | $I_{OH} = -100 \mu A$ | 2.3-2.7 | $V_{CC} - 0.2$ | | |
| | | $I_{OH} = -6$ mA | 2.3 | 2.0 | | |
| | | $I_{OH} = -12$ mA | 2.3 | 1.8 | | |
| | | $I_{OH} = -18$ mA | 2.3 | 1.7 | | |
| | | $I_{OH} = -100 \mu A$ | 1.65-2.3 | $V_{CC} - 0.2$ | | |
| | | $I_{OH} = -6$ mA | 1.65 | 1.25 | | |
| | | $I_{OH} = -100 \mu A$ | 1.4 - 1.6 | $V_{CC} - 0.2$ | | |
| | | $I_{OH} = -2$ mA | 1.4 | 1.05 | | |
| | | $I_{OH} = -100 \mu A$ | 1.2 | $V_{CC} - 0.2$ | | |

DC Electrical Characteristics (Continued)

| Symbol | Parameter | Conditions | V _{CC} (V) | Min | Max | Units |
|------------------|---------------------------------------|--|------------------------|------|------|-------|
| V _{OL} | LOW Level Output Voltage | I _{OL} = 100 μA | 2.7–3.6 | | 0.2 | V |
| | | I _{OL} = 12 mA | 2.7 | | 0.4 | |
| | | I _{OL} = 18 mA | 3.0 | | 0.4 | |
| | | I _{OL} = 24 mA | 3.0 | | 0.55 | |
| | | I _{OL} = 100 μA | 2.3–2.7 | | 0.2 | |
| | | I _{OL} = 12 mA | 2.3 | | 0.4 | |
| | | I _{OL} = 18 mA | 2.3 | | 0.6 | |
| | | I _{OL} = 100 μA | 1.65–2.3 | | 0.2 | |
| | I _{OL} = 6 mA | 1.65 | | 0.3 | | |
| | I _{OL} = 100 μA | 1.4 - 1.6 | | 0.2 | | |
| | I _{OL} = 2 mA | 1.4 | | 0.35 | | |
| | I _{OL} = 100 μA | 1.2 | | 0.05 | | |
| I _I | Input Leakage Current | 0 ≤ V _I ≤ 3.6V | 1.2–3.6 | | ±5.0 | μA |
| I _{OZ} | 3-STATE Output Leakage | 0 ≤ V _O ≤ 3.6V V _I = V _{IH} or V _{IL} | 1.2–3.6 | | ±10 | μA |
| I _{OFF} | Power-OFF Leakage Current | 0 ≤ (V _I , V _O) ≤ 3.6V | 0 | | 10 | μA |
| I _{CC} | Quiescent Supply Current | V _I = V _{CC} or GND | 1.2–3.6 | | 20 | μA |
| | | V _{CC} ≤ (V _I , V _O) ≤ 3.6V (Note) | 1.2–3.6 | | ±20 | |
| ΔI _{CC} | Increase in I _{CC} per Input | V _{IH} = V _{CC} - 0.6V | 2.7–3.6 | | 750 | μA |

Note 5: Outputs disabled or 3-STATE only.

| AC Electrical Characteristics (Note 6) | | | | | | | |
|--|-----------------------------------|---|------------------------|--|-----------|-------|-----------------|
| Symbol | Parameter | Conditions | V _{CC} (V) | T _A = -40°C to +85°C | | Units | Figure Number |
| | | | | Min | Max | | |
| t _{PHL} t _{PLH} | Propagation Delay | C _L = 30 pF, R _L = 500Ω | 3.3 ± 0.3 | 0.8 | 2.5 | ns | Figures 1, 2 |
| | | | 2.5 ± 0.2 | 1.0 | 3.0 | | |
| | | | 1.8 ± 0.15 | 1.5 | 6.0 | | |
| | | | | C _L = 15 pF, R _L = 2kΩ | 1.5 ± 0.1 | 1.0 | 12.0 |
| | | | 1.2 | 1.5 | 30.0 | | |
| t _{PZL} t _{PZH} | Output Enable Time | C _L = 30 pF, R _L = 500Ω | 3.3 ± 0.3 | 0.8 | 3.5 | ns | Figures 1, 3, 4 |
| | | | 2.5 ± 0.2 | 1.0 | 4.1 | | |
| | | | 1.8 ± 0.15 | 1.5 | 8.2 | | |
| | | | | C _L = 15 pF, R _L = 2kΩ | 1.5 ± 0.1 | 1.0 | 16.4 |
| | | | 1.2 | 1.5 | 41.0 | | |
| t _{PLZ} t _{PHZ} | Output Disable Time | C _L = 30 pF, R _L = 500Ω | 3.3 ± 0.3 | 0.8 | 3.5 | ns | Figures 1, 3, 4 |
| | | | 2.5 ± 0.2 | 1.0 | 3.8 | | |
| | | | 1.8 ± 0.15 | 1.5 | 6.8 | | |
| | | | | C _L = 15 pF, R _L = 2kΩ | 1.5 ± 0.1 | 1.0 | 13.6 |
| | | | 1.2 | 1.5 | 34.2 | | |
| t _{OSSL} t _{OSLH} | Output to Output Skew (Note 7) | C _L = 30 pF, R _L = 500Ω | 3.3 ± 0.3 | | 0.5 | ns | |
| | | | 2.5 ± 0.2 | | 0.5 | | |
| | | | 1.8 ± 0.15 | | 0.75 | | |
| | | | | C _L = 15 pF, R _L = 2kΩ | 1.5 ± 0.1 | | 1.5 |
| | | | 1.2 | | 1.5 | | |

Note 6: For C_L = 50pF, add approximately 300 ps to the AC maximum specification.

Note 7: Skew is defined as the absolute value of the difference between the actual propagation delay for any two separate outputs of the same device. The specification applies to any outputs switching in the same direction, either HIGH-to-LOW (t_{OSSL}) or LOW-to-HIGH (t_{OSLH}).

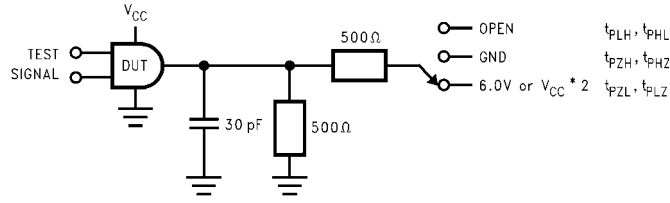
Dynamic Switching Characteristics

| Symbol | Parameter | Conditions | V _{CC} (V) | T _A = +25°C | Units |
|------------------|---|--|------------------------|------------------------|-------|
| | | | | Typical | |
| V _{OLP} | Quiet Output Dynamic Peak V _{OL} | C _L = 30 pF, V _{IH} = V _{CC} , V _{IL} = 0V | 1.8 | 0.25 | V |
| | | | 2.5 | 0.6 | |
| | | | 3.3 | 0.8 | |
| V _{OLV} | Quiet Output Dynamic Valley V _{OL} | C _L = 30 pF, V _{IH} = V _{CC} , V _{IL} = 0V | 1.8 | -0.25 | V |
| | | | 2.5 | -0.6 | |
| | | | 3.3 | -0.8 | |
| V _{OHV} | Quiet Output Dynamic Valley V _{OH} | C _L = 30 pF, V _{IH} = V _{CC} , V _{IL} = 0V | 1.8 | 1.5 | V |
| | | | 2.5 | 1.9 | |
| | | | 3.3 | 2.2 | |

Capacitance

| Symbol | Parameter | Conditions | T _A = +25°C | Units |
|------------------|-------------------------------|---|------------------------|-------|
| | | | Typical | |
| C _{IN} | Input Capacitance | V _{CC} = 1.8, 2.5V or 3.3V, V _I = 0V or V _{CC} | 6.0 | pF |
| C _{OUT} | Output Capacitance | V _I = 0V or V _{CC} , V _{CC} = 1.8V, 2.5V or 3.3V | 7.0 | pF |
| C _{PD} | Power Dissipation Capacitance | V _I = 0V or V _{CC} , f = 10 MHz, V _{CC} = 1.8V, 2.5V or 3.3V | 20.0 | pF |

AC Loading and Waveforms (V_{CC} 3.3V ± 0.3V to 1.8V ± 0.15V)



| TEST | SWITCH |
|--------------------|---|
| t_{PLH}, t_{PHL} | Open |
| t_{PZL}, t_{PLZ} | 6V at $V_{CC} = 3.3 \pm 0.3V$; $V_{CC} \times 2$ at $V_{CC} = 2.5 \pm 0.2V; 1.8V \pm 0.15V$ |
| t_{PZH}, t_{PHZ} | GND |

FIGURE 1. AC Test Circuit

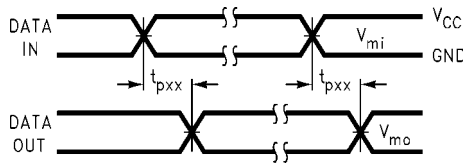


FIGURE 2. Waveform for Inverting and Non-Inverting Functions

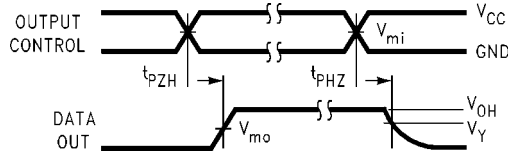


FIGURE 3. 3-STATE Output High Enable and Disable Times for Low Voltage Logic

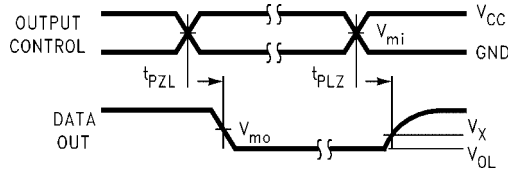
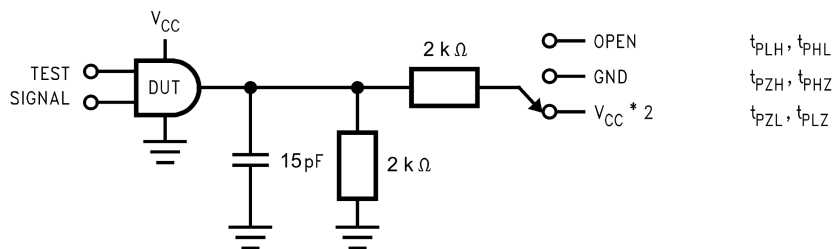


FIGURE 4. 3-STATE Output Low Enable and Disable Times for Low Voltage Logic

| Symbol | V_{CC} | | |
|----------|-----------------|------------------|------------------|
| | 3.3V ± 0.3V | 2.5V ± 0.2V | 1.8V ± 0.15V |
| V_{mi} | 1.5V | $V_{CC}/2$ | $V_{CC}/2$ |
| V_{mo} | 1.5V | $V_{CC}/2$ | $V_{CC}/2$ |
| V_X | $V_{OL} + 0.3V$ | $V_{OL} + 0.15V$ | $V_{OL} + 0.15V$ |
| V_Y | $V_{OH} - 0.3V$ | $V_{OH} - 0.15V$ | $V_{OH} - 0.15V$ |

AC Loading and Waveforms (V_{CC} 1.5V to 1.2V \pm 0.1V)



| TEST | SWITCH |
|--------------------|--|
| t_{PLH}, t_{PHL} | Open |
| t_{PZL}, t_{PLZ} | $V_{CC} \times 2$ at $V_{CC} = 1.5 \pm 0.1V$ |
| t_{PZH}, t_{PHZ} | GND |

FIGURE 5. AC Test Circuit

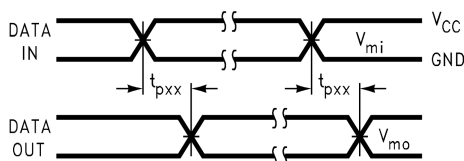


FIGURE 6. Waveform for Inverting and Non-Inverting Functions

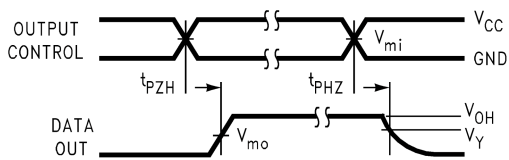


FIGURE 7. 3-STATE Output High Enable and Disable Times for Low Voltage Logic

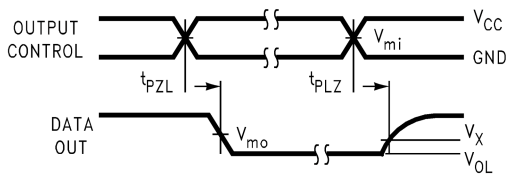
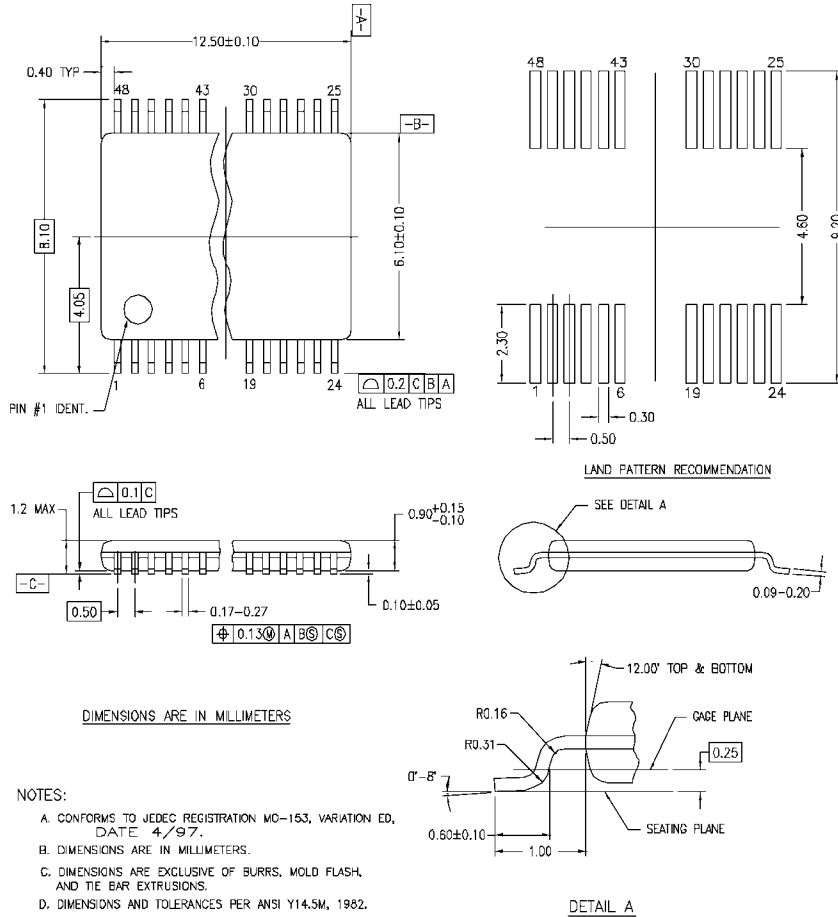


FIGURE 8. 3-STATE Output Low Enable and Disable Times for Low Voltage Logic

| Symbol | V_{CC} |
|----------|-----------------|
| | 1.5V \pm 0.1V |
| V_{mi} | $V_{CC}/2$ |
| V_{mo} | $V_{CC}/2$ |
| V_X | $V_{OL} + 0.1V$ |
| V_Y | $V_{OH} - 0.1V$ |

Physical Dimensions inches (millimeters) unless otherwise noted



MTD48REVC

48-Lead Thin Shrink Small Outline Package (TSSOP), JEDEC MO-153, 6.1mm Wide Package Number MTD48

Fairchild does not assume any responsibility for use of any circuitry described, no circuit patent licenses are implied and Fairchild reserves the right at any time without notice to change said circuitry and specifications.

LIFE SUPPORT POLICY

FAIRCHILD'S PRODUCTS ARE NOT AUTHORIZED FOR USE AS CRITICAL COMPONENTS IN LIFE SUPPORT DEVICES OR SYSTEMS WITHOUT THE EXPRESS WRITTEN APPROVAL OF THE PRESIDENT OF FAIRCHILD SEMICONDUCTOR CORPORATION. As used herein:

1. Life support devices or systems are devices or systems which, (a) are intended for surgical implant into the body, or (b) support or sustain life, and (c) whose failure to perform when properly used in accordance with instructions for use provided in the labeling, can be reasonably expected to result in a significant injury to the user.
2. A critical component in any component of a life support device or system whose failure to perform can be reasonably expected to cause the failure of the life support device or system, or to affect its safety or effectiveness.

www.fairchildsemi.com